


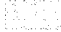



Attachment 1

	A	B	C	D	E	F	G
1	SOURCE NAME	TO TRIBUTARY	TOWNSHIP	RANGE	SECTION	QQ	SURVEY CODE AND NUMBER
2	Unnamed Stream	Little Bear Creek	44N	03E	19	NWNW	L 1
3	Unnamed Stream	Bussel Creek	44N	03E	19	NWSE	
4	Unnamed Stream	Bussel Creek	44N	03E	19	SESE	
5	Unnamed Stream	Bussel Creek	44N	03E	19	SWSE	
6	Unnamed Stream	Bussel Creek	44N	03E	19	SWSW	L 4
7	Bussel Creek	Marble Creek	44N	03E	20		
8	Bussel Creek	Marble Creek	44N	03E	30	NENE	
9	Unnamed Stream	Bussel Creek	44N	03E	30	NENE	
10	Unnamed Stream	Bussel Creek	44N	03E	30	NESE	
11	Bussel Creek	Marble Creek	44N	03E	30	NESW	
12	Unnamed Stream	Bussel Creek	44N	03E	30	NESW	
13	Unnamed Stream	Bussel Creek	44N	03E	30	NESW	
14	Bussel Creek	Marble Creek	44N	03E	30	NWSE	
15	Unnamed Stream	Bussel Creek	44N	03E	30	NWSE	
16	Unnamed Stream	Bussel Creek	44N	03E	30	NWSE	
17	Bussel Creek	Marble Creek	44N	03E	30	SENE	
18	Unnamed Stream	Bussel Creek	44N	03E	30	SENE	
19	Unnamed Stream	Bussel Creek	44N	03E	30	SENE	
20	Unnamed Stream	Bussel Creek	44N	03E	30	SENE	
21	Unnamed Stream	Bussel Creek	44N	03E	30	SENE	
22	Unnamed Stream	Bussel Creek	44N	03E	30	SENE	
23	Unnamed Stream	Bussel Creek	44N	03E	30	SESE	
24	Bussel Creek	Marble Creek	44N	03E	30	SESW	
25	Unnamed Stream	Bussel Creek	44N	03E	30	SESW	
26	Unnamed Stream	Bussel Creek	44N	03E	30	SESW	
27	Bussel Creek	Marble Creek	44N	03E	30	SWNE	
28	Unnamed Stream	Bussel Creek	44N	03E	30	SWNE	
29	Bussel Creek	Marble Creek	44N	03E	30	SWSW	L 4
30	Unnamed Stream	Bussel Creek	44N	03E	30	SWSW	L 4

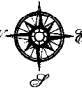

Attachment 2
 Place of Use Map Fire Suppression - Water Right No. 91-07950B
 National Forests in Idaho and the Kaniksu, Lolo and Kootenai NF in Montana

Key to Features

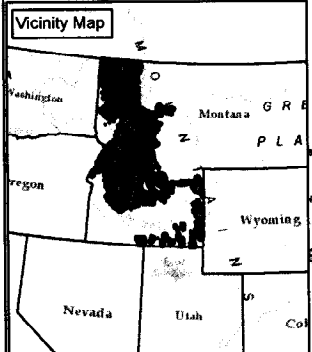
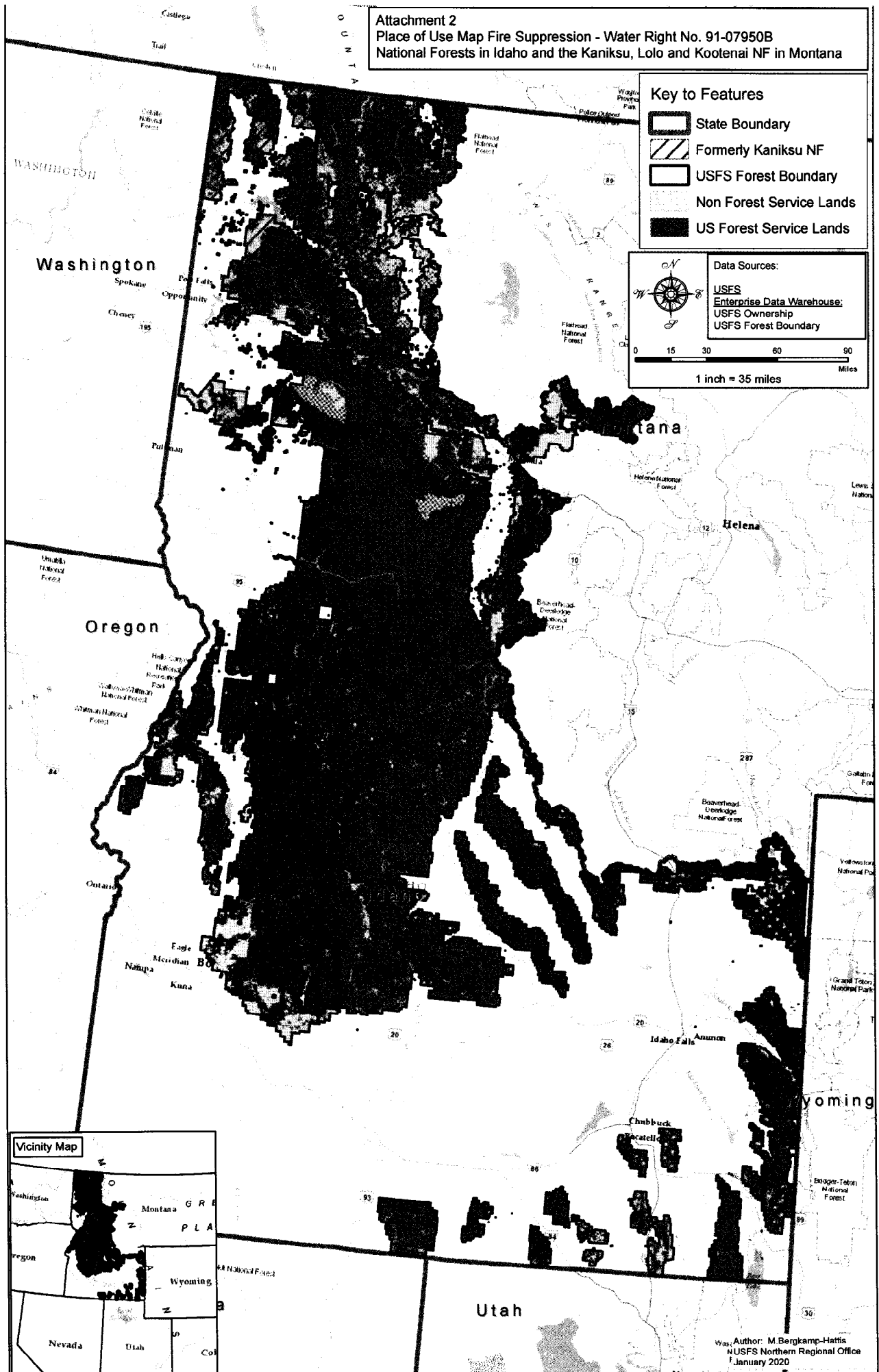
-  State Boundary
-  Formerly Kaniksu NF
-  USFS Forest Boundary
-  Non Forest Service Lands
-  US Forest Service Lands

Data Sources:

- USFS
- Enterprise Data Warehouse
- USFS Ownership
- USFS Forest Boundary

1 inch = 35 miles



Author: M. Bergkamp-Hattis
 NUSFS Northern Regional Office
 January 2020